

Residential Development

Congleton, Windsor Place



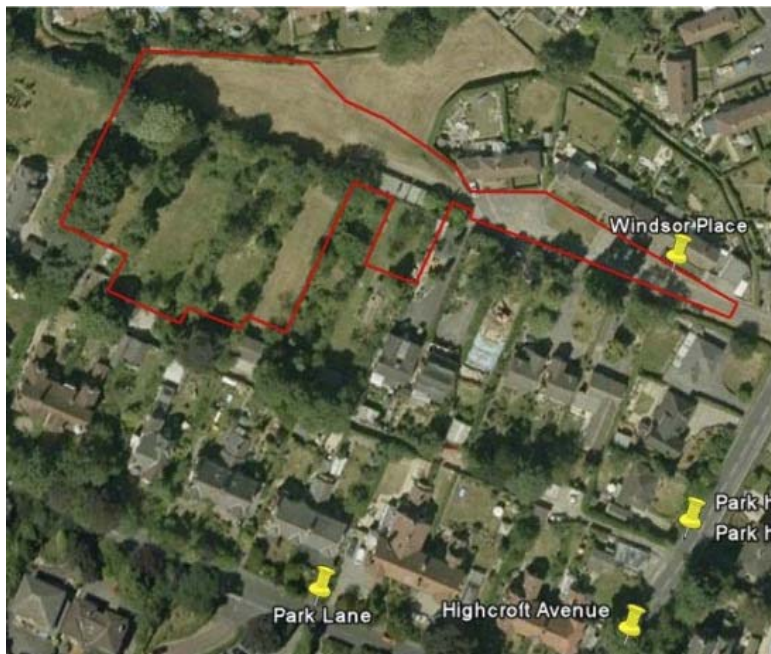
Site Overview

Size of Site: 1 acre gross; 0.88 acre net

Location: off Windsor Place, Congleton, Cheshire, CW12 3ET

Planning Status: planning permission granted for 12 houses

Sales Status: for sale (price reduced by £100,000 Jan 2012)



Residential Development Congleton, Windsor Place

